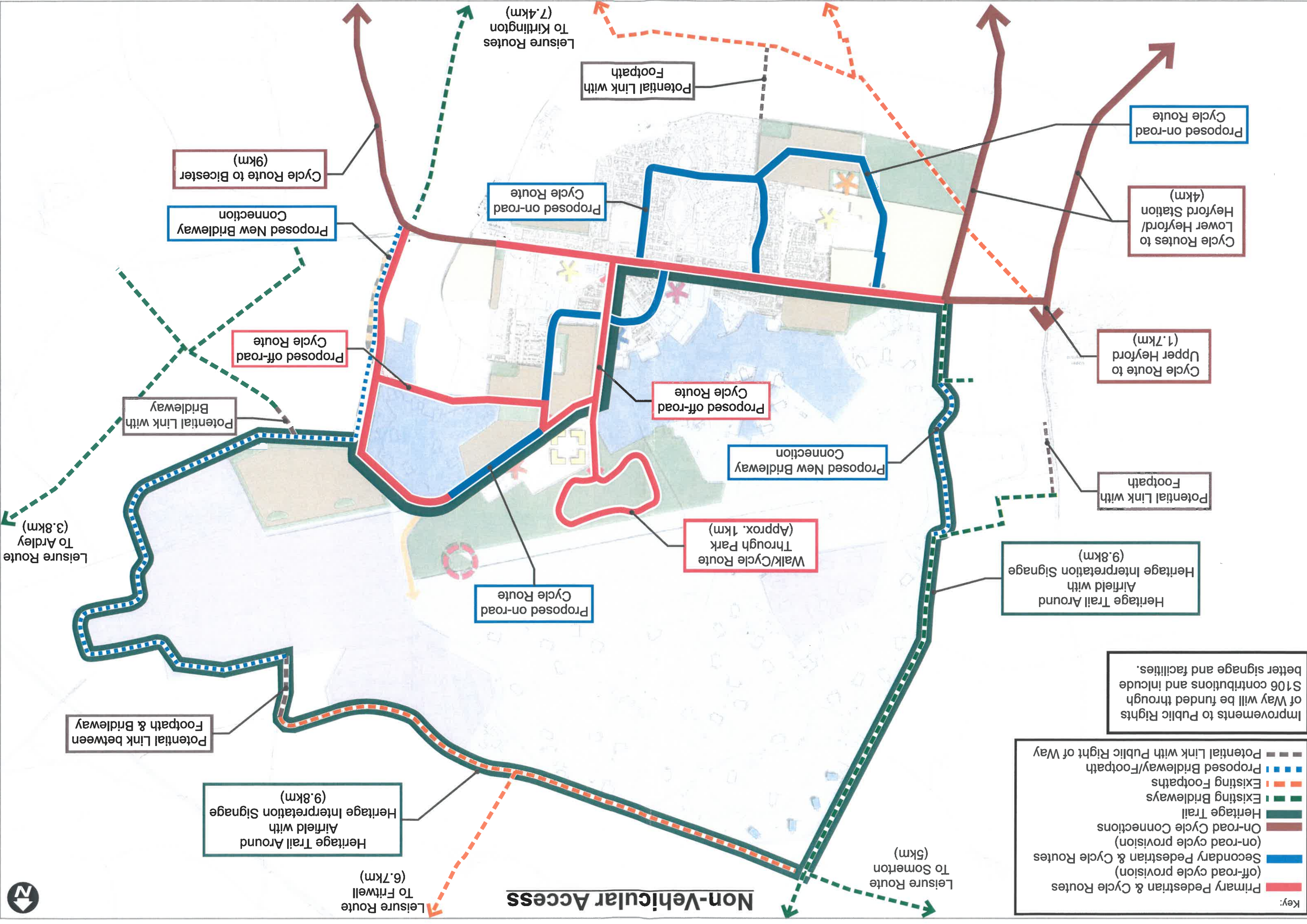


- PROPOSALS KEY**
- EXISTING APPLICATIONS (RESIDENTIAL & MIXED USE)
 - RESIDENTIAL
 - EMPLOYMENT
 - FILMING AREA
 - OPEN SPACE
 - APPROXIMATE DWELLING NUMBERS
 - NEW HEYFORD PARK FREE SCHOOL SITE - AGE RANGE TBC
 - EXPANSION OF HEYFORD PARK FREE SCHOOL
 - NEW ACCESSIBLE HERITAGE OFFER
 - CARE VILLAGE
 - MIXED USE EXPANSION OF VILLAGE CENTRE & PROPOSED LOCATION OF COMMUNITY HEALTH HUB - TO INCLUDE GPs & OTHER SERVICES
 - PROVISION OF INDOOR SPORT & YOUTH FACILITY
 - OBSERVATION TOWER & ZIP WIRE
 - BUS ROUTE
 - PRIMARY HGV ACCESS TO FLYING FIELD
 - PRIMARY PEDESTRIAN ROUTE
 - PROPOSED ROUTE FOR THE PORTWAY & AVES DITCH FOOTPATH/BRIDLE WAY ROUTE
 - EXISTING FOOTPATHS
 - EXISTING BRIDLEWAY

PEGASUS DESIGN LTD. 2017. ALL RIGHTS RESERVED. THIS DOCUMENT IS THE PROPERTY OF PEGASUS DESIGN LTD. AND IS NOT TO BE REPRODUCED OR TRANSMITTED IN ANY FORM OR BY ANY MEANS, ELECTRONIC OR MECHANICAL, WITHOUT THE WRITTEN PERMISSION OF PEGASUS DESIGN LTD.

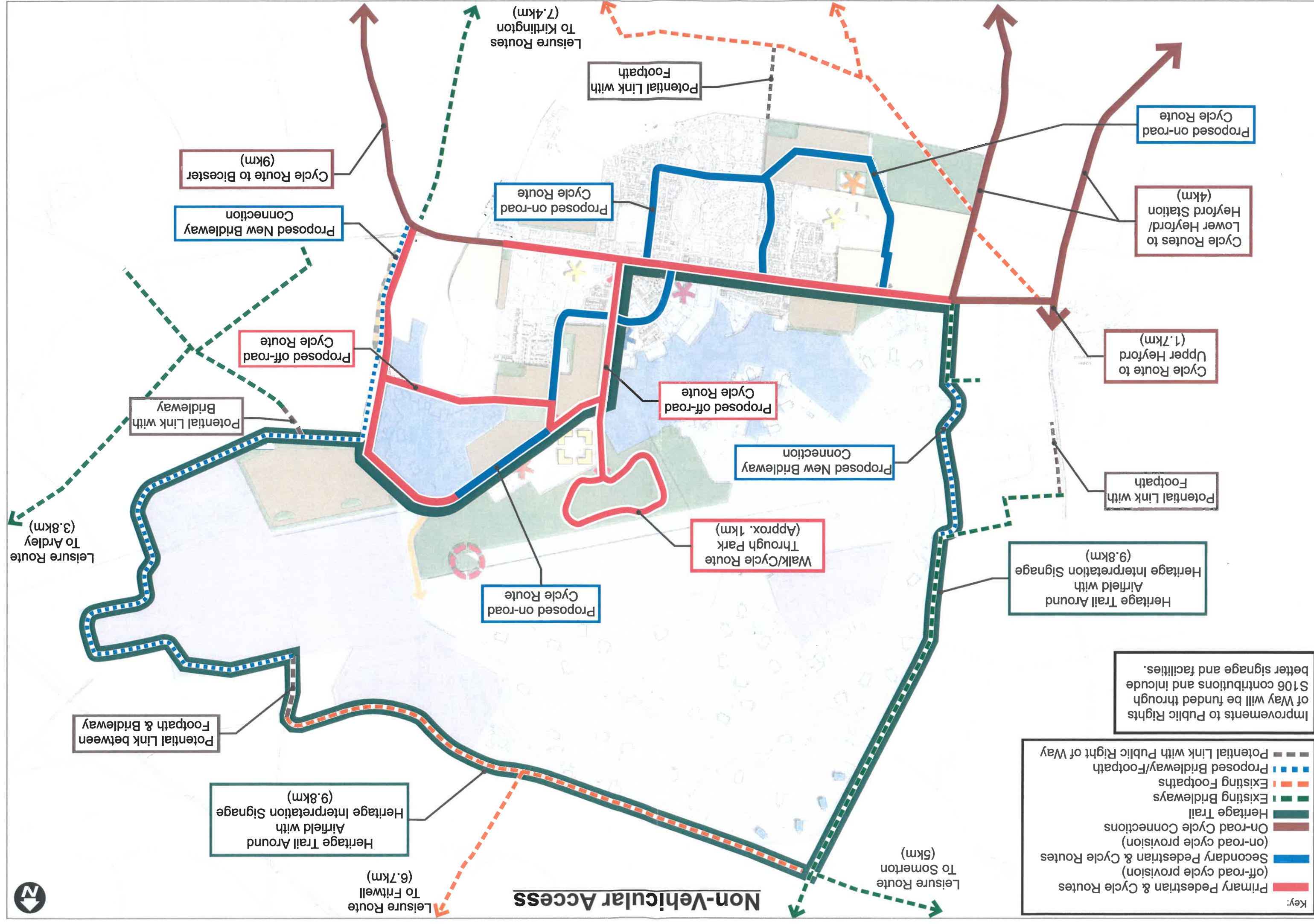


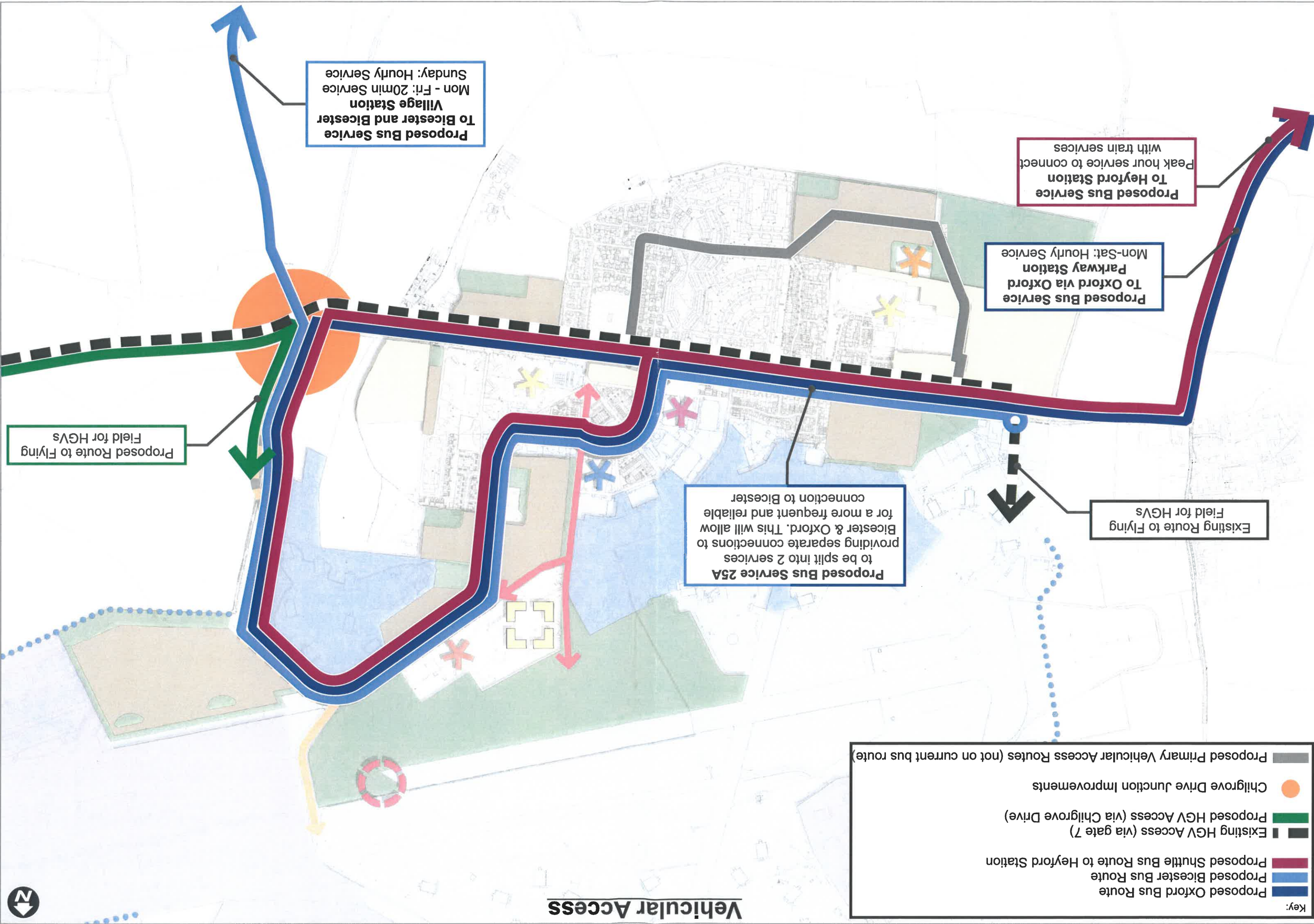
Non-Vehicular Access

Key:

- Primary Pedestrian & Cycle Routes (Red line)
- Secondary Pedestrian & Cycle Routes (Blue line)
- (off-road cycle provision) (Blue line)
- (on-road cycle provision) (Red line)
- On-road Cycle Connections (Dark Green line)
- Heritage Trail (Dark Green line)
- Existing Bridleways (Green dashed line)
- Existing Footpaths (Orange dashed line)
- Proposed Bridleway/Footpath (Blue dashed line)
- Potential Link with Public Right of Way (Grey dashed line)

Improvements to Public Rights of Way will be funded through S106 contributions and include better signage and facilities.





Proposed Bus Service To Bicester and Bicester Village Station
 Mon - Fri: 20min Service
 Sunday: Hourly Service

Proposed Bus Service To Heyford Station
 Peak hour service to connect with train services

Proposed Bus Service To Oxford via Oxford Parkway Station
 Mon-Sat: Hourly Service

Proposed Route to Flying Field for HGVs

Proposed Bus Service 25A
 to be split into 2 services providing separate connections to Bicester & Oxford. This will allow for a more frequent and reliable connection to Bicester

Existing Route to Flying Field for HGVs

- Key:**
- Proposed Oxford Bus Route
 - Proposed Bicester Bus Route
 - Proposed Shuttle Bus Route to Heyford Station
 - Existing HGV Access (via gate 7)
 - Proposed HGV Access (via Chilgrove Drive)
 - Chilgrove Drive Junction Improvements
 - Proposed Primary Vehicular Access Routes (not on current bus route)

Vehicular Access

